



# ASBURY FOUNDATION

ALABAMA - EMERALD COAST

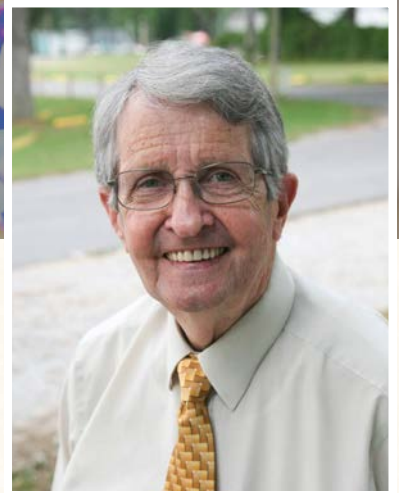


ASBURY THEOLOGICAL SEMINARY

*Fall 2023*  
NEWSLETTER

# Strong Foundations and Bright Futures

For over 40 years, the Asbury Seminary Foundation has given students the life-changing opportunity to attend Asbury Theological Seminary. Throughout its history, the foundation has been blessed with champions who have tirelessly advocated for our students' needs and connected with our generous donors. One of the most admired of these champions was the late Rev. John Edward Chandler. He loved preaching, teaching and living God's Word, and seeing lives transformed through the grace of God. He had a heart for mentoring young pastors and helping them obtain their theological education through Asbury Seminary.



**Rev. John  
Edward Chandler**

His peers and former scholarship recipients remember him fondly for his ability to engage with individuals and share the exciting possibilities that financial assistance could bring to both students and local churches in our Conference. Although he is no longer with us, the strong foundations that he built will continue to inspire us to ensure that even greater support will be available to Asbury students in the future. We hope that you will become one of our vital partners to continue Ed Chandler's passionate legacy.

**Your support enables the next generation of Christian leaders to attend seminary at Asbury and graduate free of debt. Thank you for investing in the future leaders of the church.**

You can learn more about our foundation or donate online anytime by visiting [www.asburyseminaryfoundation.com](http://www.asburyseminaryfoundation.com)

To make a tax-deductible donation by check, please make it out to AWF Asbury Seminary Foundation, and mail to:

*Asbury Seminary Foundation, attn. Jo Ann Roberts  
3027 Fellowship Lane  
Pace, FL 32571*

# Asbury Graduates Share their Gratitude with our Generous Donors

## From Rev. Hunter Bethea

In May of this year, I had the privilege of graduating from Asbury Theological Seminary with my Master of Divinity and Certificate in Leadership Development. The several years I spent in Wilmore were

some of the most formative of my life. One of the reasons for this was that, in large part due to the generosity of the Asbury Foundation, I was financially free to choose that which would be more beneficial to my formation as a pastor: classes, discipleship, fellowship, internships, and a job that was for experience instead of meeting a financial need.

In June, I began serving as Associate Pastor at Mulder Church, a Global Methodist congregation in Wetumpka, Alabama. Graduating without debt has been one of the biggest blessings for my wife and I as we have been able to begin making Wetumpka our home and invest ourselves in the community, even welcoming our baby girl to the world in September. In being debt-free from my theological training, we have been able to look to the future and say a whole-hearted "Yes!" to where God has been leading us without the fear of if we are able to do so financially. *Thank you to the Asbury Foundation's board and generous donors for making this a reality!*



## From Rev. Brian Hasty

*The Asbury Foundation has helped my family follow God's calling to serve through pastoral ministry. The education and experience at Asbury Seminary shaped me for ministry and deepened my love of God.*

*Currently, I am thankful to be serving as the Teaching Pastor at Christ United in Mobile, AL. I'll forever be grateful to you for surrounding us with God's grace through your generosity and support!*



## Meet Our Current Students

**We are proud** of each of our students for accepting God's call to ministry and pursuing their theological education at Asbury. The more you get to know them, the more you will see how God has gifted them to thrive in ministry in unique ways. Be sure to follow us on Facebook, visit our website, and keep your eyes open for future newsletters for future updates with you about all of our students.



Christian Dixon



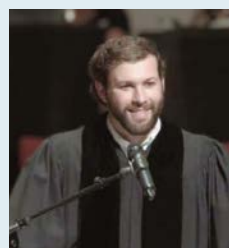
CJ Harvey



Clayton Lassiter



Jimmy Barnes



John Kelsoe



Logan Brendle



Marcus Popenfoose



Tanya Murphy



Victoria Scofield

CELEBRATING

25

CHURCH  
PARTNERS

•2023-2024•

**We are excited to announce our *Celebrating25* campaign to support our future Asbury seminary students. The Global Methodist Church's newly launched Alabama Emerald Coast Annual Conference is now 135 churches and growing. We will be celebrating the first 25 GMC churches who make a financial commitment to support the Asbury Foundation for the next year. If your congregation would be interested in being a church partner through a financial gift, simply make a contribution on behalf of your church.**

***You learn how to donate by visiting [www.asburyseminaryfoundation.com](http://www.asburyseminaryfoundation.com)***